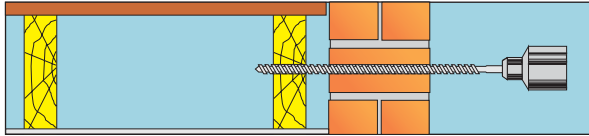
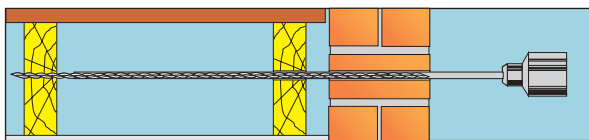


Bow-Fix is a lateral restraint system, which offers a quick and easy method of restraining bowing walls to timber floor chambers

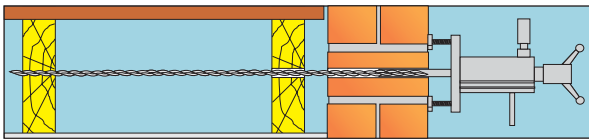
Installation Procedures



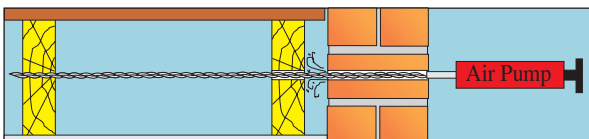
1) Drill clearance hole through wall and first joist.



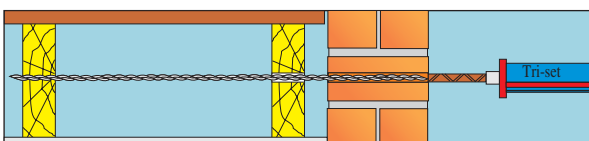
2) Drive Bow-fix tie through second joist with a support tool.



3) Load test Bow-fix to check strength of fixing.

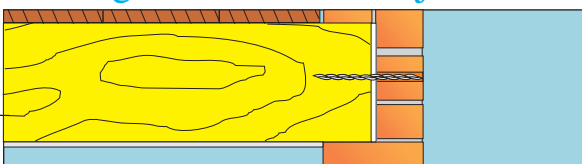


4) Use a air pump to eliminate loose debris and dust.



5) Fill clearance hole with Tri-set resin to bond tie to the wall.

Fixing Bow-Fix ties to joist ends



Benefits

- ✓ Quick installation.
- ✓ No lifting of flooring boards.
- ✓ Easy load tested.
- ✓ No splitting timber floor joists.
- ✓ Installed from outside.
- ✓ Stress free fixing.

Features

- ✓ Easy and problem free installation.
- ✓ Austenitic 304 or 316 Stainless Steel.
- ✓ Minimal structural and visual disturbance.
- ✓ Allows for thermal movement.
- ✓ Fixes to joist sides and joist ends.

FIXING TEST DATA		
Fixing Loads	Material	ENBEDMENT
1.8 KN Side Grain	Timber	50mm
1.6 KN End Grain	Timber	75mm
1.6 KN Resin	Soft Clay Brick	70mm