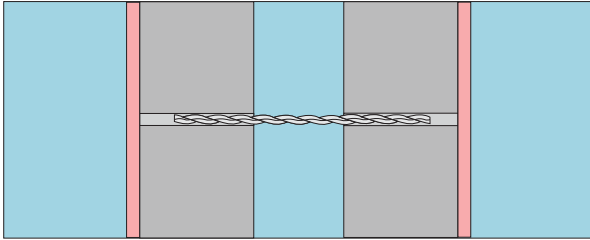


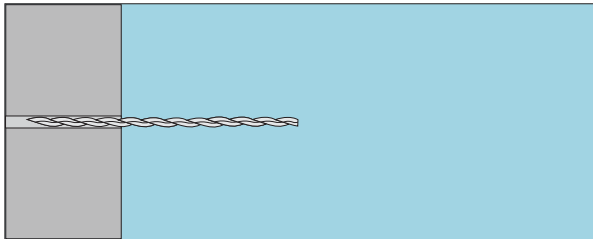
For tying cavity Party walls when improved sound insulation is required.  
For tying all types of masonry cavities requiring class 2 bed-joints ties.

## Tying Cavity Party Walls

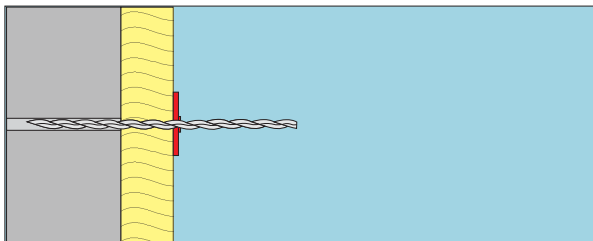


Using Bed Ties in cavity party walls to reduce sound transfer

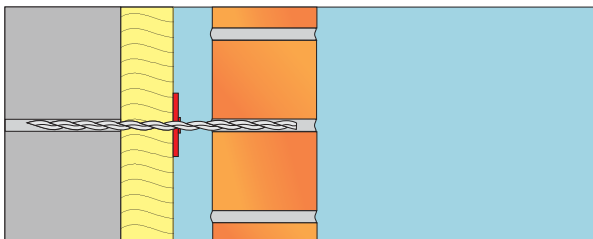
## Tying cavity bed joints



(1) Place Bed Tie in mortar during inner leaf construction



(2) Push insulation onto Bed Tie and fit retaining clip



(3) Embed outer tie end in mortar of outer leaf masonry.

## Bed tie classification DD140

Tie size	Tie density	Laid in Mortar
Ø6mm	2.5m <sup>2</sup>	Class 2,

## Benefits

- ✓ High tensile and compression strength.
- ✓ Allows for thermal movement.
- ✓ Multi water drips.
- ✓ Easy installed through cavity insulation.
- ✓ Designed and tested to DD140.

## Features

- ✓ Austenitic 304 or 316 Stainless Steel.
- ✓ Effective in tying cavity and solid walls.

## Bed tie length selection

Cavity mm	Tie Length mm
50	210
75	235
100	260
125	285
140	300